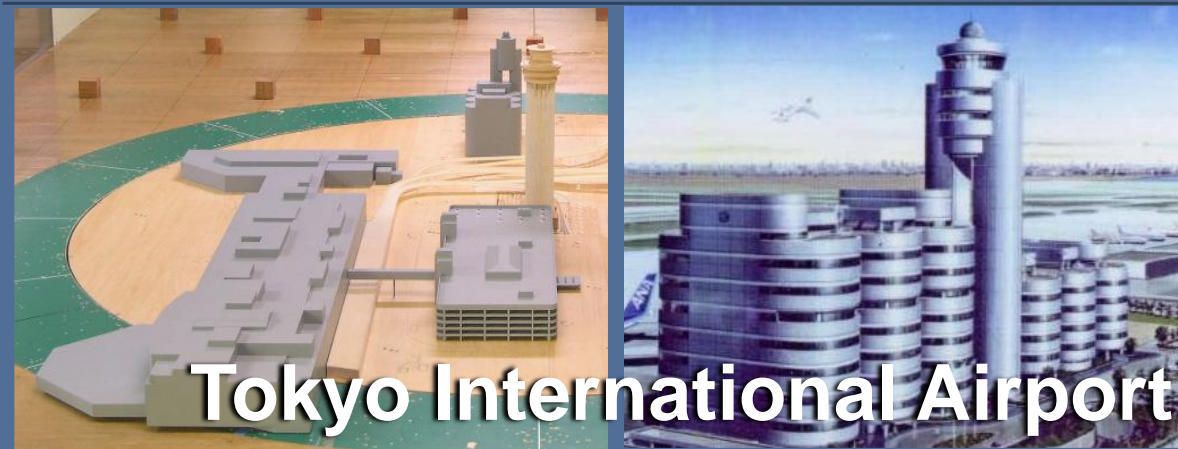


Wind Resistant Design of Buildings and Structures



Tokyo International Airport
Passengers' Terminal
Buildings, 1993



New Tokyo International Airport
Air-traffic Control Tower, 1994

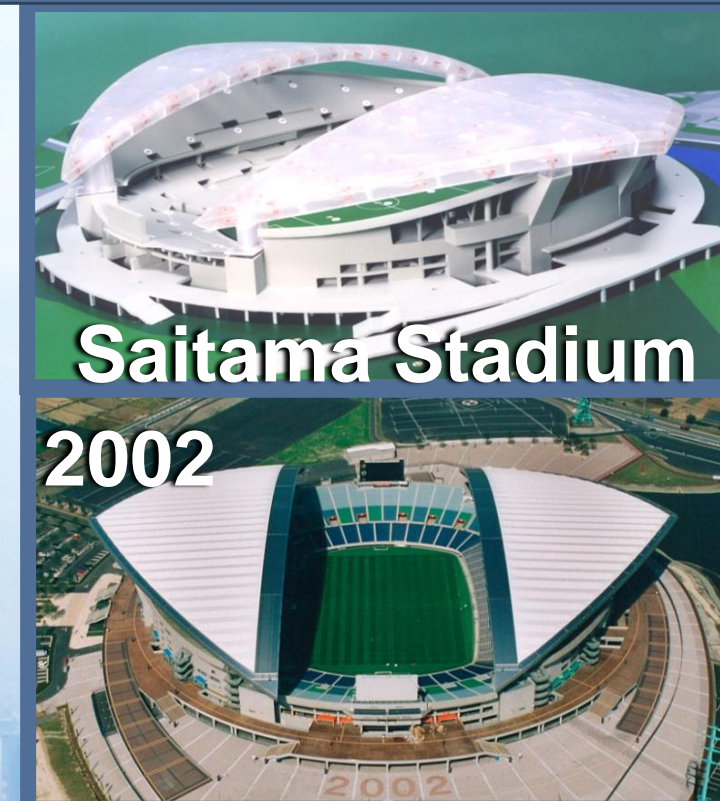


Tokyo H. R. Stadium 2007

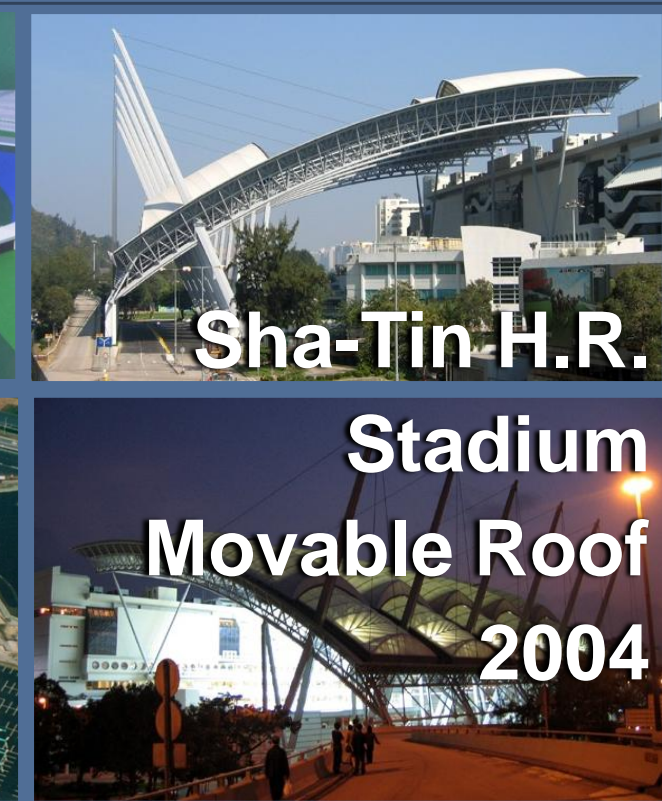
634m



Tokyo Sky Tree
(New Tokyo Tower)

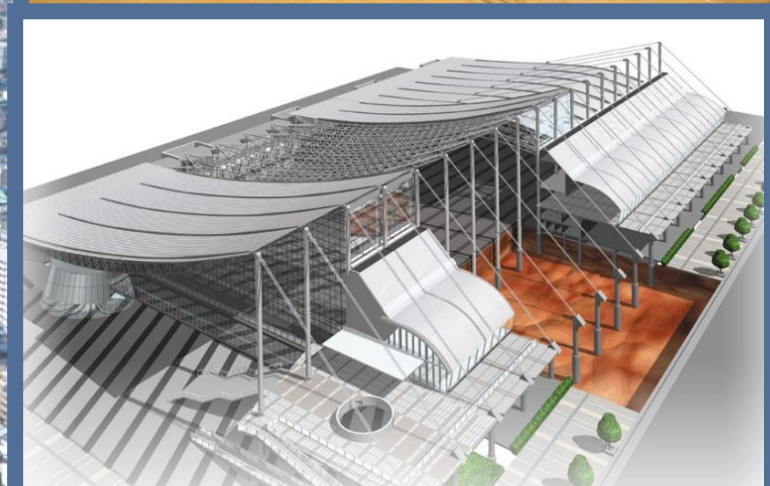


Saitama Stadium
2002



Sha-Tin H.R.
Stadium
Movable Roof
2004

Ishikawa Sports Center
2008

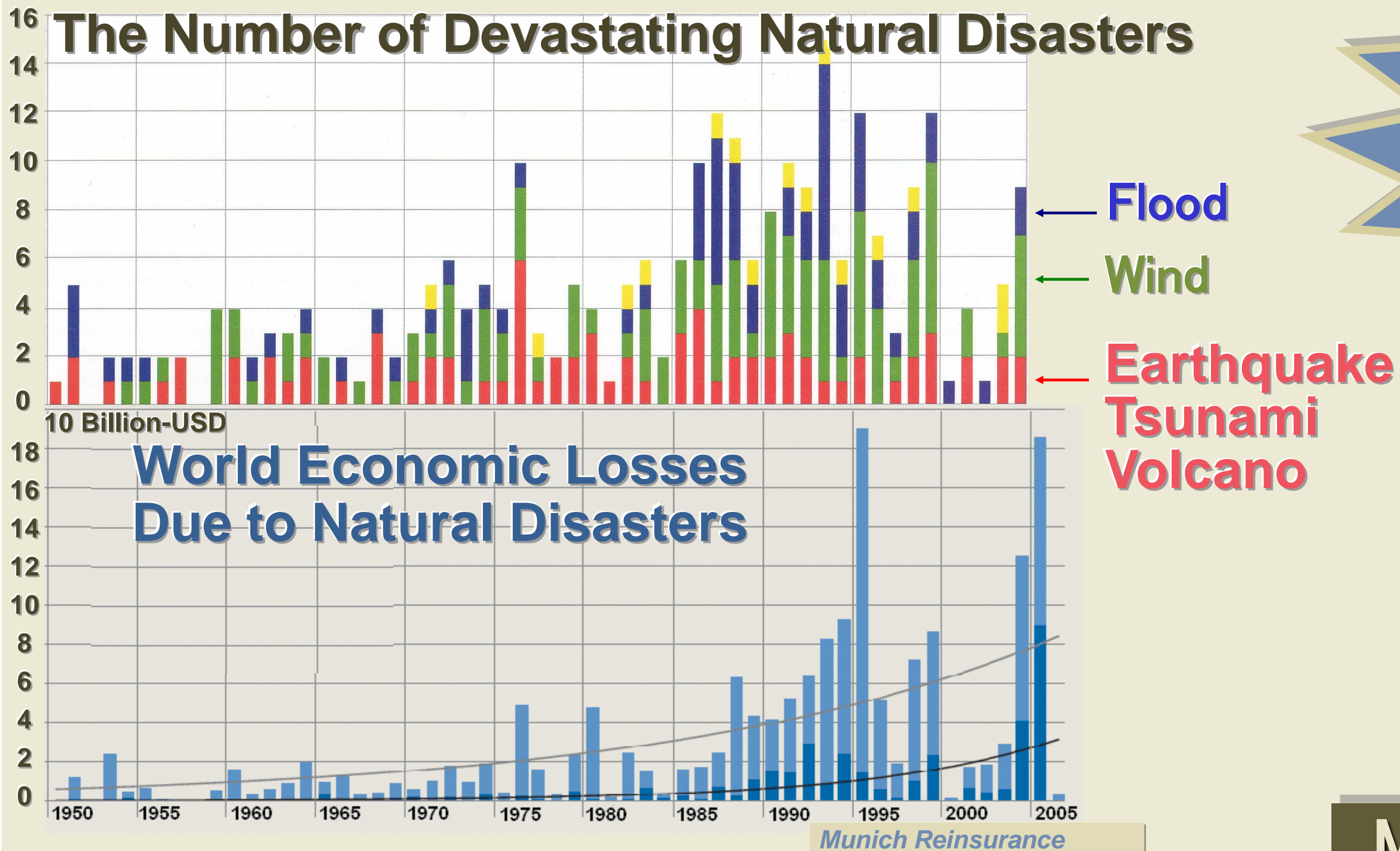


Makuhari Messe
Convention Center
1989, 1997



Wind-Related Disaster Risk Reduction

The Number of Devastating Natural Disasters



The majority of economic losses due to natural disasters are caused by WINDS and Related FLOODS.



Cyclone Nargis, Myanmar, May 2008 Deaths: 138,366

Mitigation of Wind-Related Disasters

I AWE

To Realize Safe and Secured Society



International Association
for Wind Engineering

Rapid Urbanization

Global Warming? Climate Change?

